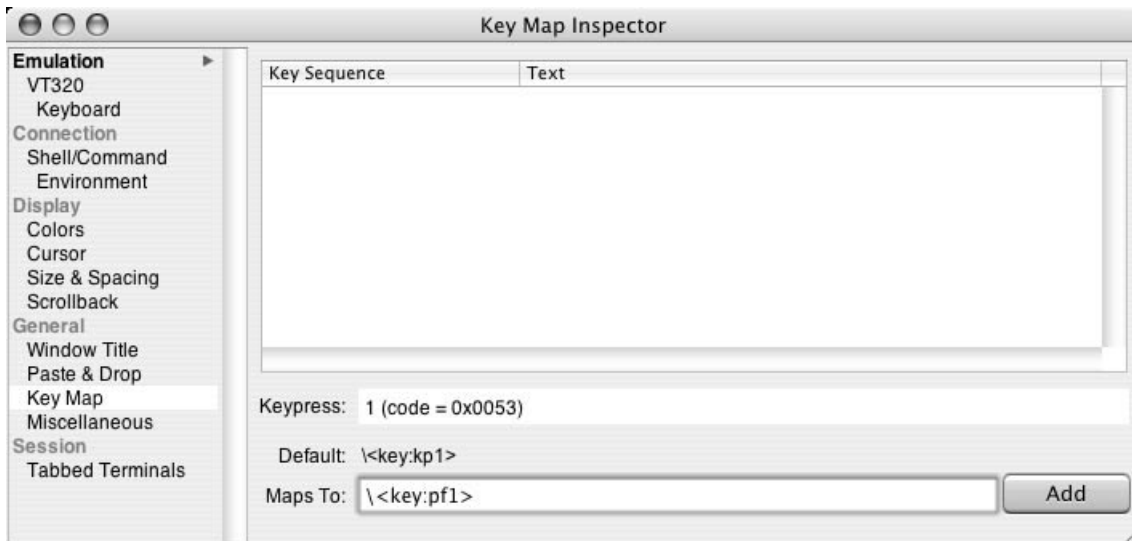
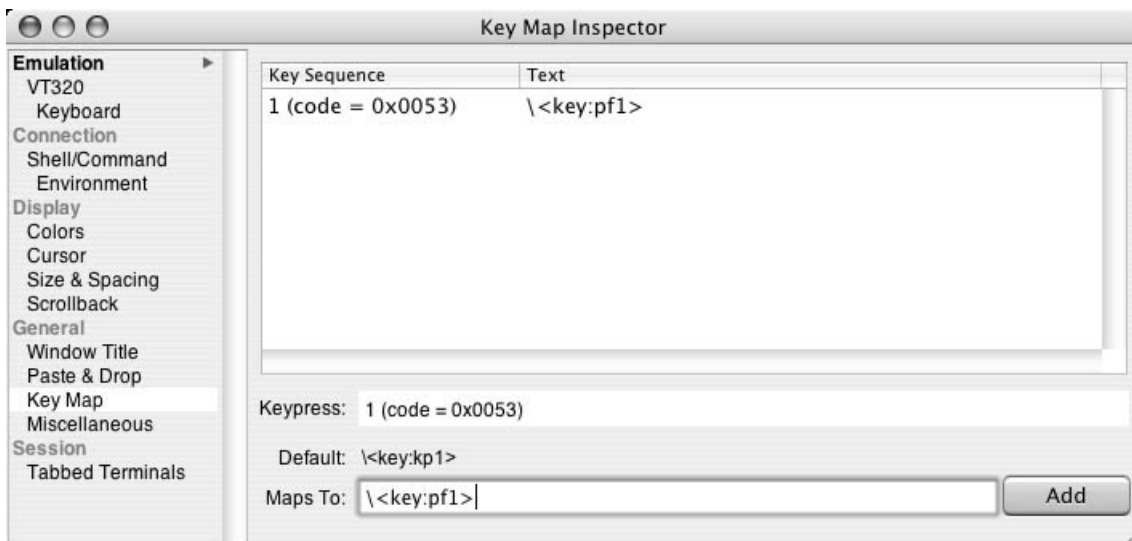


Mapping a Key

When using TerminalOne you may want to map certain keys. We will map the function key, PF1 to the 1 key on the numeric keypad. Select *Key Map* on the left hand side under *General* to bring up the *Key Map Inspector*. Select the **Keypress** field and press the 1 key on the numeric keypad on the right hand side of your keyboard. TerminalOne will display the displayed value and the default key mapping (`\<key:kp1>`). Enter `\<key:pf1>` in the **Maps To:** textfield.



Click **Add** to map the key. The list of re-mapped keys will appear on the listbox above.



To reset to the key's default mapping, select it from the listbox, clear out the Maps To: textfield and hit return.